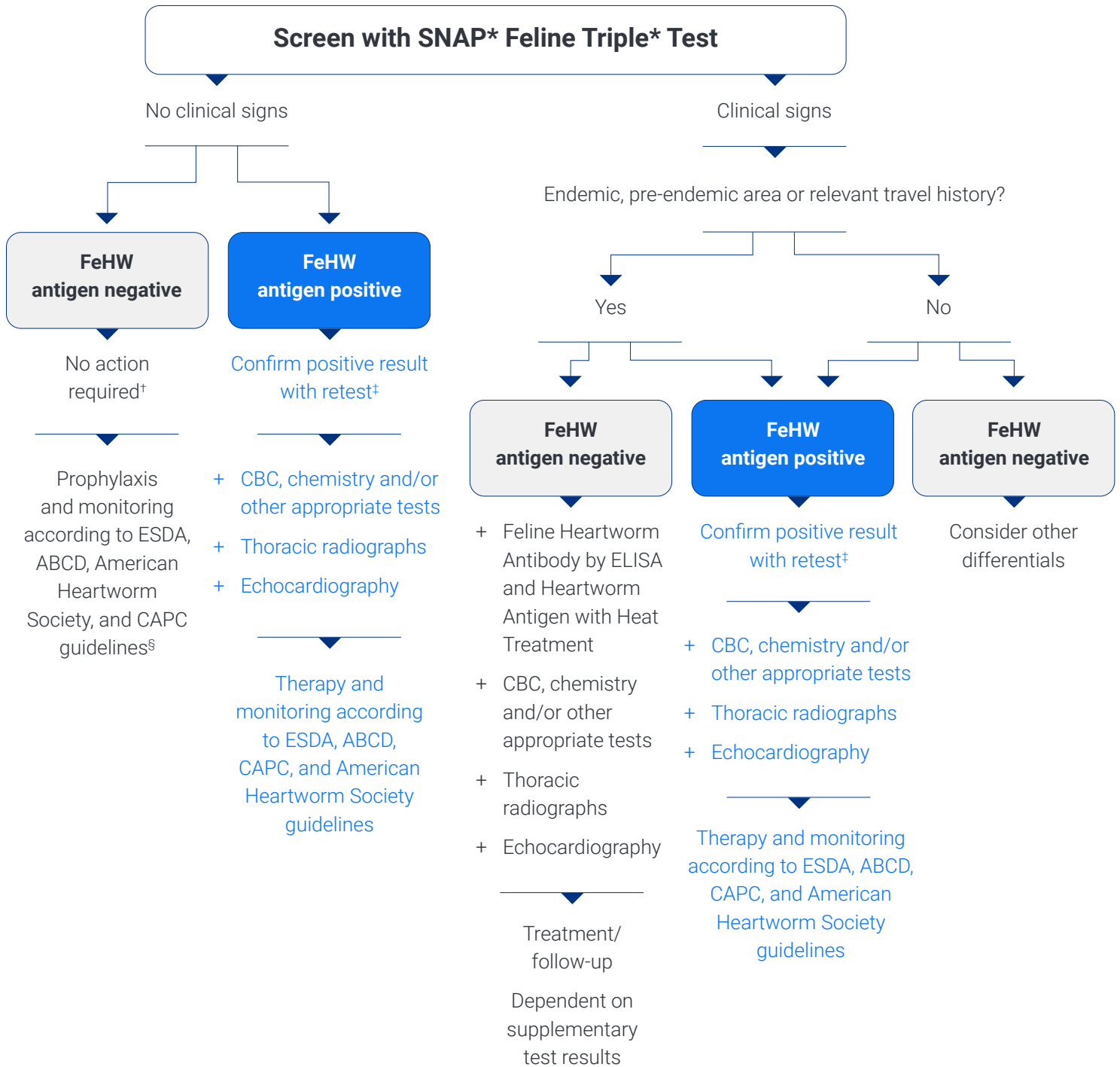


Feline heartworm (FeHW) diagnostic algorithm



†In endemic and pre-endemic areas or cats with relevant travel history, consider the Feline Heartworm Antibody by ELISA.

‡The Heartworm Antigen by ELISA with Heat Treatment is recommended.

§ESDA is the European Society of Dirofilariosis and Angiostrongylosis, ABCD is the European Advisory Board on Cat Diseases, and CAPC is the Companion Animal Parasite Council.